



WELCOME TO



EXCLUSIVE 2 & 3 BED RESIDENCES
AT VILE PARLE



9920466897/9870747174

A SKY-LIFE DESIGNED WITH
LEISURE AVENUES
YOU ALWAYS DREAMED

1. YOGA & MEDITATION DECK
2. MULTIPURPOSE SPORTS TURF
3. FEATURE WALL+SCULPTURE
4. LANDSCAPE FEATURE
5. TELESCOPE VIEWING DECK
6. ROOFTOP CINEMA
7. ROOFTOP BAR & BARBEQUE
8. SEATING PODS
9. SOLAR PANELS
10. JOGGING TRACK



9920466897/9870747174

A MAGNIFICENT ENTRANCE GREETING WITH STYLE

GRAND AIR-CONDITIONED LOBBY



9920466897/9870747174

INTERNAL SPECIFICATIONS

APARTMENTS

VITRIFIED FLOORING IN ALL ROOMS
SPLIT AC PROVISION IN ALL ROOMS
CORNER VIEW WINDOWS

BATHROOMS

SANITARY WARE AND WC OF RENOWNED BRANDS
GEYSER /WATER HEATER PROVISIONS
ANTI-SKID FLOORING
DESIGNER TILES DADO
WASH BASIN
MIRRORS
PROVISION OF EXHAUST FAN

KITCHEN

GRANITE PLATFORM
STAINLESS STEEL SINK
PIPED GAS PROVISION
DESIGNER TILES DADO
WATER PURIFIER PROVISION
PROVISION OF EXHAUST FAN





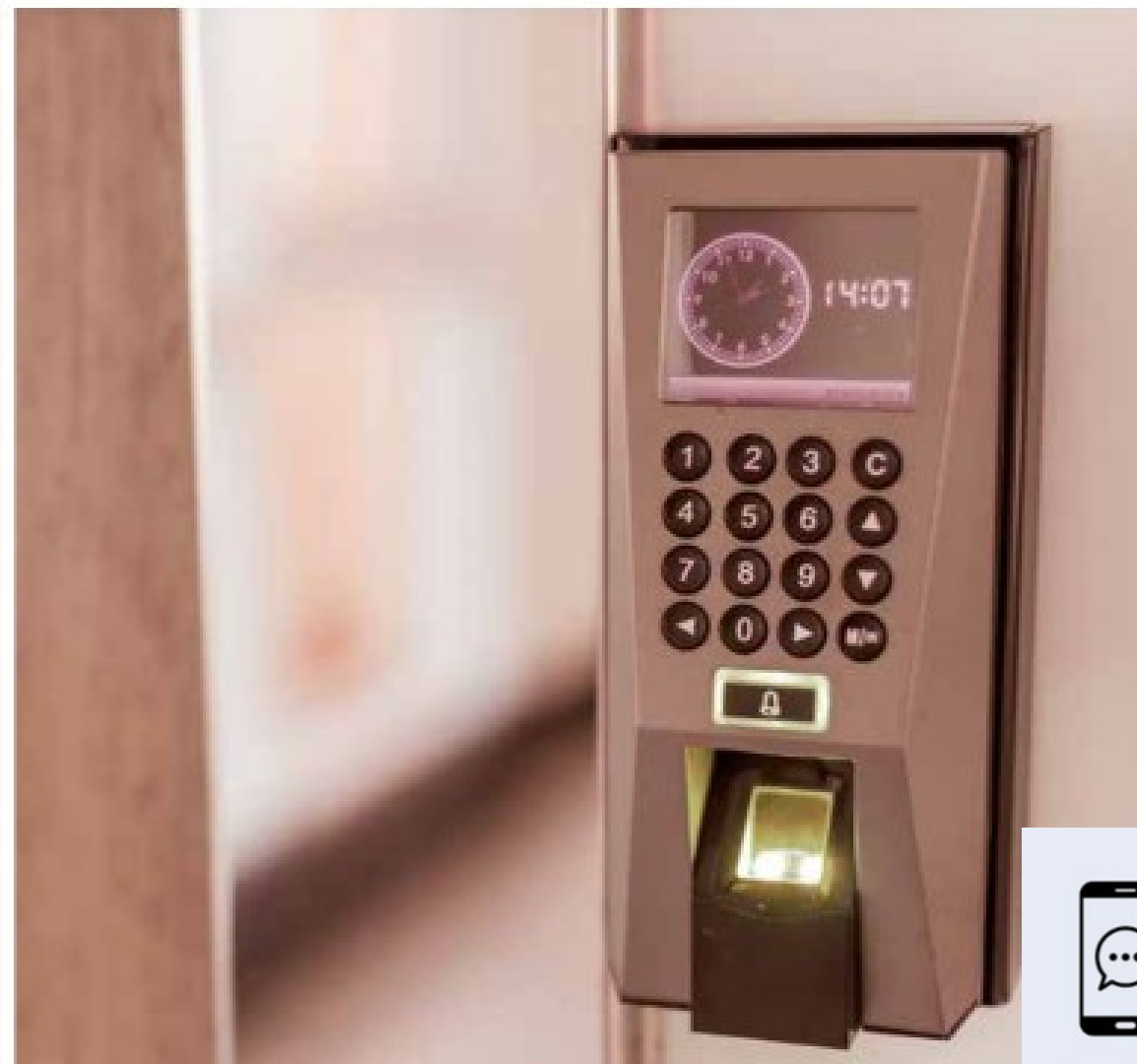
WHERE
YOUR HOME COMES
WITH A SAFETY NET

BIOMETRIC ENTRY

CCTV CAMERA

EFFICIENT FIREFIGHTING SYSTEM
AS PER CFO NORMS

ELEVATOR WITH ARD SYSTEMS



9920466897/9870747174

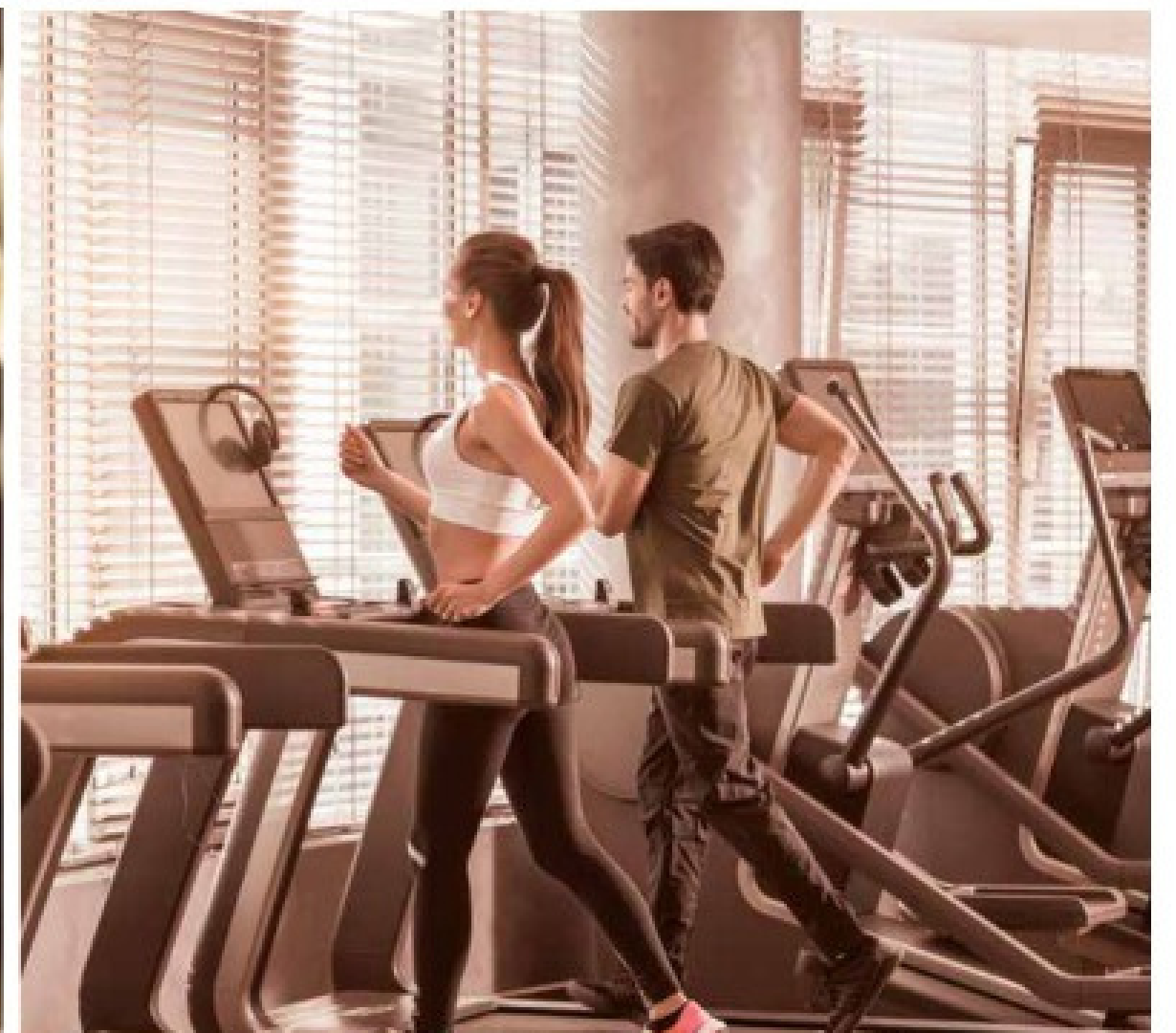


WHERE
LIVING IS A BEAUTIFUL
EXPERIENCE

KIDS' PLAY AREA

FULLY EQUIPPED GYMNASIUM

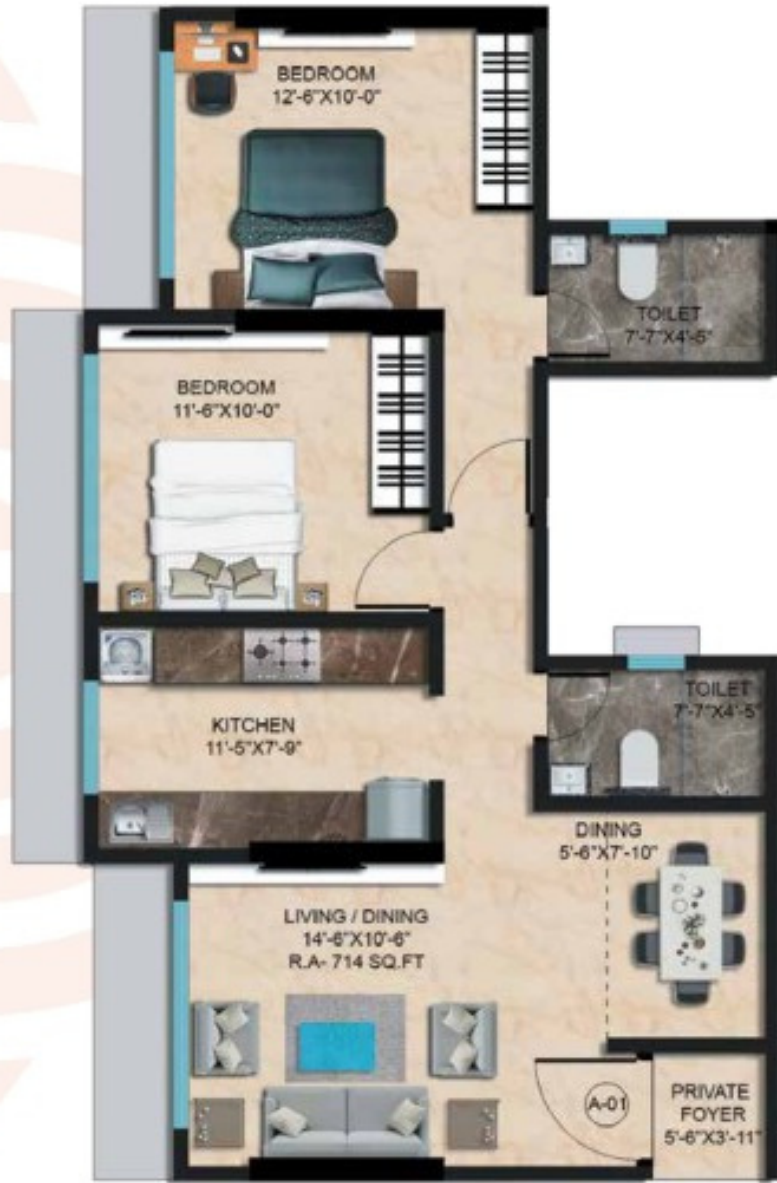
SENIOR CITIZEN SEATING AREA



TYPICAL FLOOR PLAN

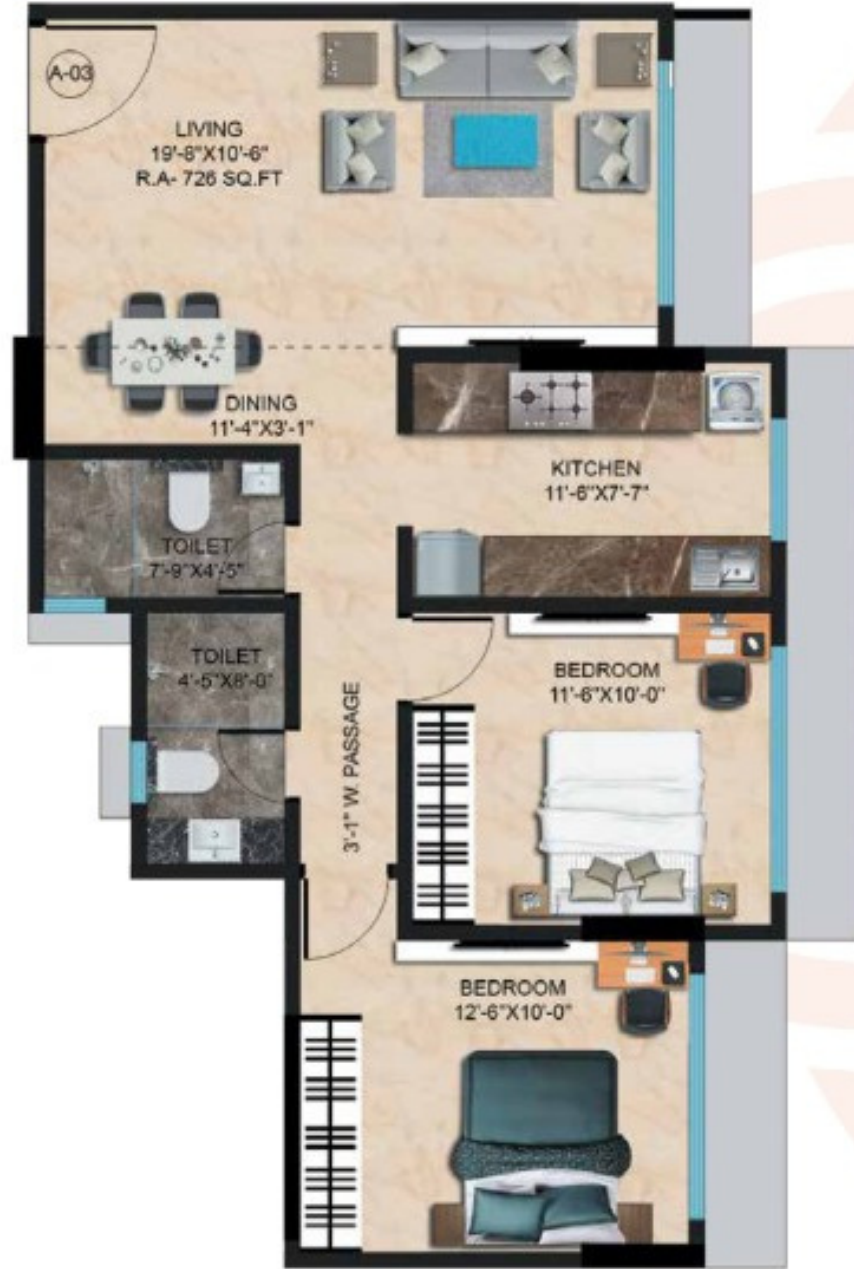


2 BHK UNIT PLAN
(AREA = 714 SQ.FT)



9920466897/9870747174

2 BHK UNIT PLAN
(C.A. = 726 SQ.FT)



3 BHK UNIT PLAN
(FLAT 958 SQ.FT | DECK 39 SQ.FT | C.A. = 997 SQ.FT)



9920466897/9870747174



**WHERE WE MAKE EMOBILITY
A REALITY FOR YOU
EV CHARGING POINT**



**BUSINESS CENTRE
WHERE YOUR WORKPLACE
CENTRES AROUND YOUR HOME SPACE**

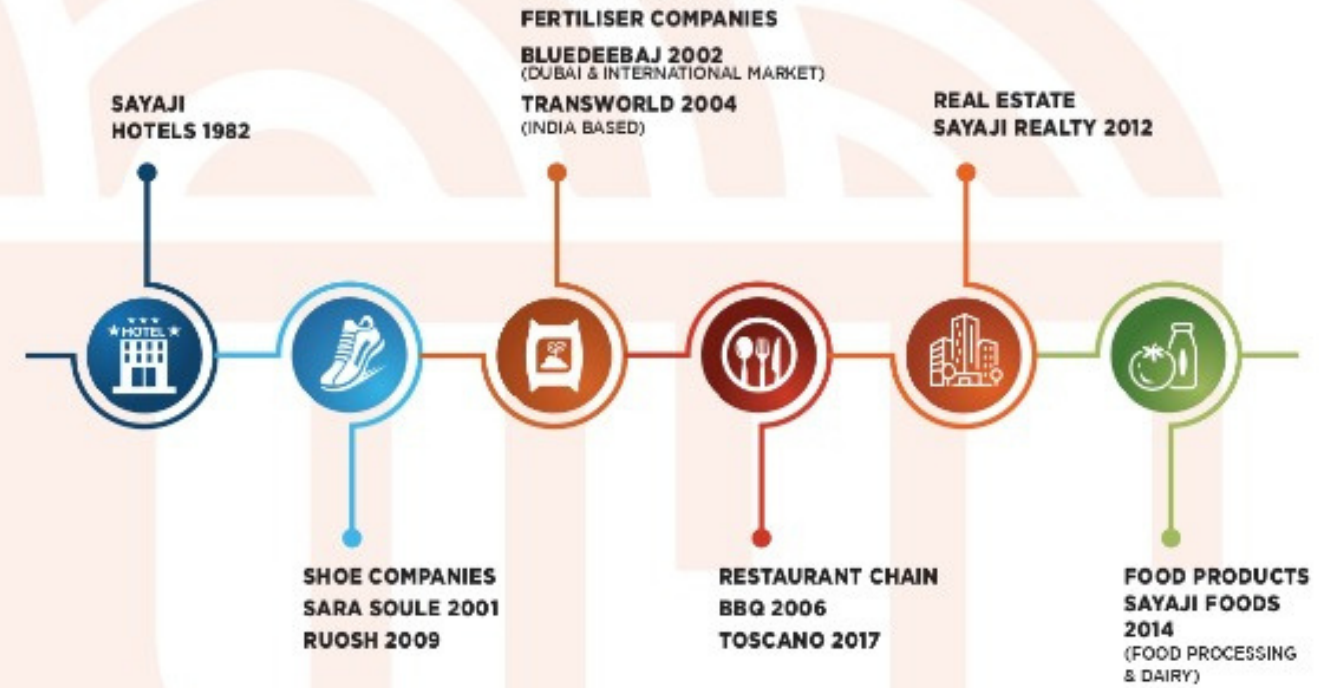




WHERE TRUST MEETS HOME

Renowned for creating "Yours Truly" service, Sayaji Group has a 33-year old legacy reflecting a history of luxury and lifestyle. Today, Sayaji has a pan-India presence and is recognised for its world-class amenities and hospitality services. With decades of experience in hotel construction, the group is now keeping its foot in real estate. Sayaji Realty is a rock-solid company offering its investors and clients "a complete experience" in real estate. The innovative designs, beautiful aesthetics, cutting-edge technology, and holistic lifestyle set the Sayaji projects a class apart

A TRADITION OF EXCEEDING BENCHMARKS



Disclaimer: Notwithstanding anything, in no event shall, the group of companies such as Blue Deebaj FZCO, Transworld Furtichem Pvt. Ltd., Sayaji Hotels Ltd., Barbeque Nation Hospitality Ltd. and Sara Soule Private Limited has no connections in any manner with Sayaji Realty Pvt. Ltd. ("Company"), as it is a separate legal and business entity, also their promoters, directors, employees and agents shall not be liable to the said company's visitors for any or all damages, losses and cause of action, errors, injury, whether direct, indirect, consequential or incidental, suffered or incurred by any person/s or due to any use and/or inability to use this information, action taken or abstained or any transmission made through this Brochure.



9920466897/9870747174





WHERE YOUR HEART BELONGS

The true richness of life is found in a home that is made of family, emotions, and precious moments of joy. A personal space that fulfils all your wishes cares for your family and secures your future. Welcome to an address that realises every dream and shares every concern. Living experiences that capture the essence of timeless happiness. After all, a home can have a heart too.



9920466897/9870747174

A PRIME LANDMARK WHERE THE WORLD REVOLVES AROUND YOU

ADVANTAGE VILE PARLE

Close to the Western Expressway, corporate centres, and popular tourist destinations such as Juhu Beach.

Easy accessibility to major business hubs like Bandra, Andheri, and Kurla.

With ongoing and proposed developments, this thriving location is the most preferred, yet we offer the highest quality product at an affordable price.

Renowned educational institutes, banks, and medical services are in the vicinity.

PROJECT LOCATION BENEFITS



Opposite Jain Derasar



Close to Connecting Roads and Stations



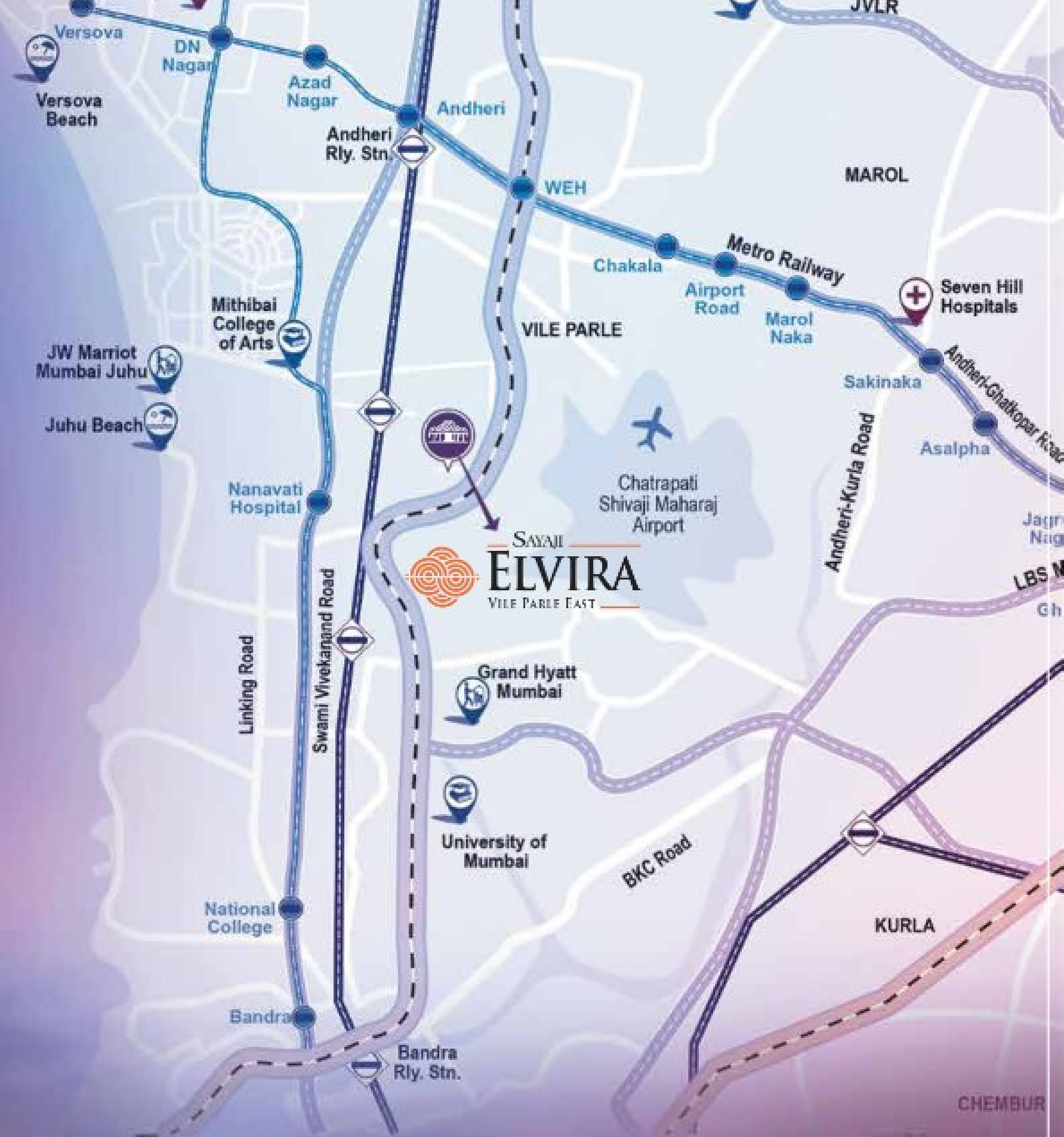
Super Marts / Medical Stores / Fuel Pump in the Vicinity



Major Schools, Colleges, Banks, Hospitals nearby



Close Proximity to Proposed Metro station and Underground Road of Vile Parle



BUY YOUR HOME

www.mukeshstateagency.in



"I will forever believe that buying a home is a great investment. Why? Because you can't live in a stock certificate. You can't live in a mutual fund."

Book Now!!

www.mukeshstateagency.in



Mr. Mukesh Savla - 9920466897 / Dimple Savla - 9870747