



SKY CITY

BY OBEROI REALTY

REVEL IN ACRES OF LANDSCAPED GREENS.
 LIVE AMIDST TRULY GRAND DESIGN AESTHETICS.
 LIVE THE GLOBAL LIFESTYLE.
 MINGLE WITH A VIBRANT, DISCERNING COMMUNITY.
 SOAK IN THE FINEST LUXURY.
 EXPERIENCE DAILY, A MASTERFULLY CRAFTED HOME.
 SKY CITY HAS ARRIVED.



Disclaimer: This document does not constitute an offer and/or acceptance and/or contract and/or agreement and/or transaction and/or any intention thereof and/or a disclosure under any statute of any nature whatsoever. The pictorial/other representations herein, the layout, number/or-orientation of buildings/towers/being/structures, facilities and amenities are merely a creative imagination and an Architect's impression and are only indicative. Actual product may vary/differ from what is indicated herein. The photographs contained herein may be stock/standard photography used for the purpose and have been taken at a location other than the project site and are used to indicate a conceptual lifestyle. For detailed disclaimers refer to the page "Disclaimers" (page no. 28) all of which are deemed to be incorporated herein.

Sky City Towers A to D - MahaRERA Registration No.: P51800003582
 Sky City Tower E - MahaRERA Registration No.: P51800018404
 View details at <https://maharera.mahaonline.gov.in>

Contact Us
 99206 39914

THE OBEROI REALTY HERITAGE.

Oberoi Realty is one of India's leading real estate companies. We have relentlessly strived to bring innovation to every aspect of our business. Over the last three decades, we have established unique features that are consistent across all our projects: award-winning landscapes, state-of-the-art amenities and living spaces that are tastefully crafted.

With landmark projects across Mumbai, Oberoi Realty has earned a reputation for building homes that are gateways to a superior lifestyle for like-minded, well-heeled individuals and communities.



Contact Us
99206 39914

CLOSE TO NATURE AND THE CITY.

Located in the quaint neighbourhood of Borivali in Mumbai and with acres of beautifully landscaped gardens within Sky City, you are closer to nature like never before. What's more, the Western Express Highway and the proposed Mumbai Metro station is in close proximity ensuring that you are well-connected to business districts and leisure options.



Contact Us
99206 39914

Actual image of the show

mer. This document does not constitute an offer and/or acceptance and/or contract and/or agreement and/or transaction and/or any intention thereof and/or a disclosure any statute of any nature whatsoever. The pictorial/other representations herein, the layout, number/orientation of buildings/towers/wings/structures, facilities and es are merely a creative imagination and an Architect's impression and are only indicative. Actual product may vary/differ from what is indicated herein. The photographs ed herein may be stock/standard photography used for the purpose and have been taken at a location other than the project site and are used to indicate a conceptual s. For detailed disclaimers refer to the page "Disclaimers" (page no. 28) all of which are deemed to be incorporated herein.

Sky City Towers A to D - MahaRERA Registration No.: P518000
Sky City Tower E - MahaRERA Registration No.: P518000
View details at <https://maharera.maharera.com>

A FUSION OF VISION AND AESTHETICS.

Thoughtfully chosen amenities. Intelligent use of apartment space. Beautifully carved out landscapes. Acres of open spaces for leisure and relaxation. A place you can truly call home. Sky City is miles ahead in its design and technological innovation. A confluence of urban perspectives and a passion for creating the monumental, makes for a living concept that is entirely unique.

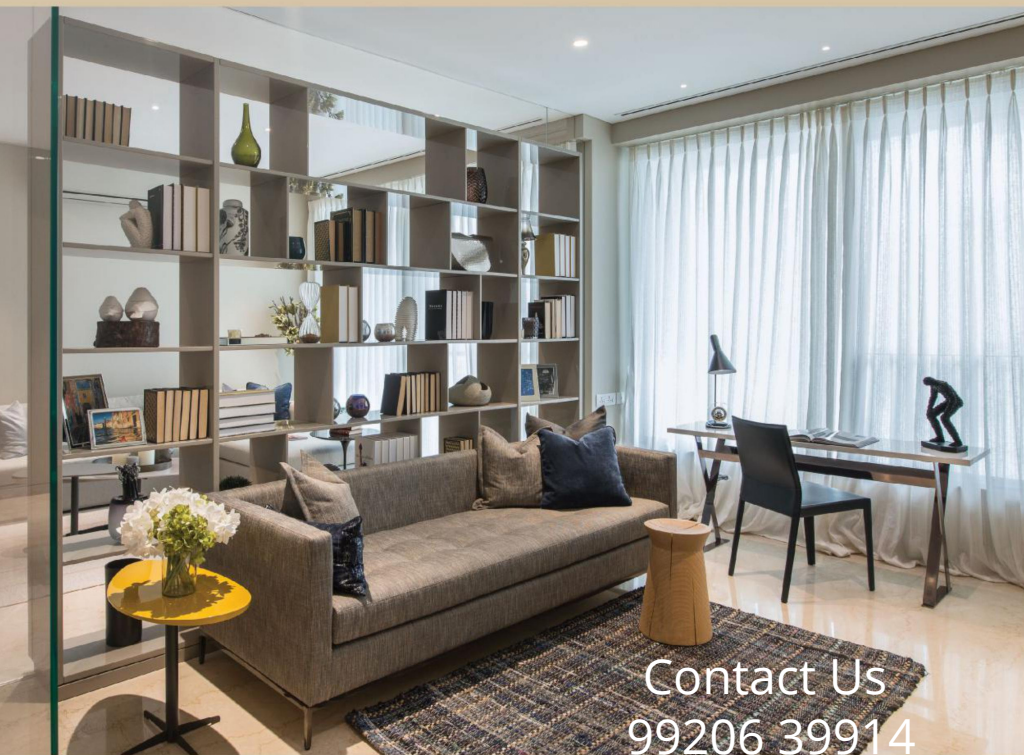


Contact Us
99206 39914

Actual image of the show

A SIGNATURE CALLED DESIGN.

Sky City is a design revelation. Drawing inspiration from the multi-terraced beauty of gardens, Sky City is literally an aesthetic experience on many levels. Grand pathways, sylvan nooks and corners, breath-taking entrances and a rare tranquillity. Everything here has been finely thought through to create a living environment that moves beyond the mundane world and into the realm of dreams. Shaping such an inspiring thought, from concept to reality, is only made possible by Oberoi Realty's collaboration with Larsen & Toubro, one of India's most respected and trusted construction companies.



Contact Us
99206 39914

Actual image of the show

mer. This document does not constitute an offer and/or acceptance and/or contract and/or agreement and/or transaction and/or any intention thereof and/or a disclosure any statute of any nature whatsoever. The pictorial/other representations herein, the layout, number/orientation of buildings/towers/wings/structures, facilities and es are merely a creative imagination and an architect's impression and are only indicative. Actual product may vary/differ from what is indicated herein. The photographs ed herein may be stock/standard photography used for the purpose and have been taken at a location other than the project site and are used to indicate a conceptual a. For detailed disclaimers refer to the page "Disclaimers" (page no. 28) all of which are deemed to be incorporated herein.

Sky City Towers A to D - MahaRERA Registration No.: P518000
Sky City Tower E - MahaRERA Registration No.: P518000
View details at <https://maharera.maharatna.com>

THE FINE POINTS OF THE FINER THINGS.

A lot of attention has been given to every little detail of homes in Sky City.

So that the smallest of things add up to create the good life, daily.



Contact Us
99206 39914

Actual image of the show

Imported marble flooring for living, dining, kitchen and all bedrooms

Vitrified/ceramic tiles for bathroom flooring and dado

Wash basin counters

Vitrified/ceramic tiles dado 2 feet high above kitchen platform

Kitchen platform with stainless steel sink and drain board

Anti-skid tiles in the balcony areas (wherever applicable)

Aluminium windows

Concealed plumbing

Branded C.P. fittings

Branded electrical switches

Video door phone

Laminated flush doors

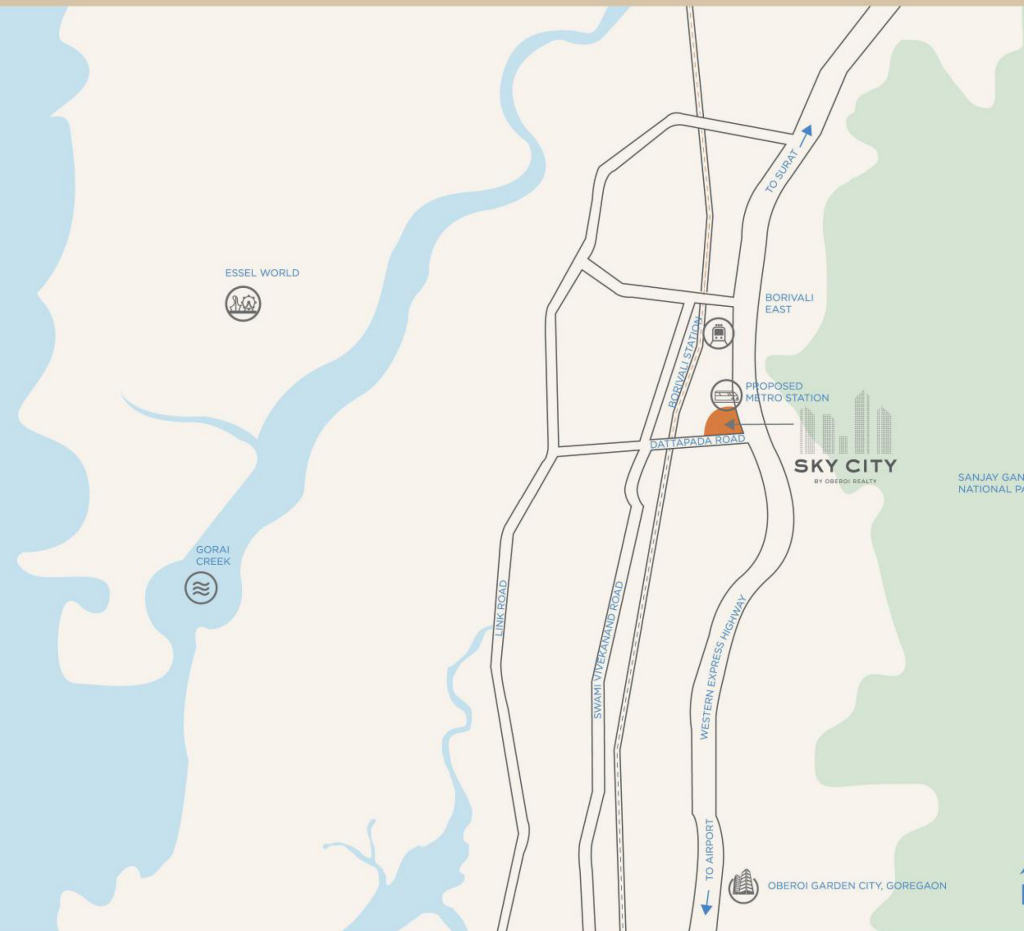
Spilt ACs/VRV*

Modular Kitchen*

Wardrobe*

*Optional Fittings/Furniture/Fixtures/Equipment on chargeable basis and as per terms and conditions specified by the developer

LOCATION MAP



- PROPOSED METRO STATION - 0 KM
- BORIVALI STATION - 1.3 KM
- OBEROI MALL - 6.2 KM
- WESTIN MUMBAI GARDEN CITY - 6.6 KM
- OBEROI INTERNATIONAL SCHOOL - 7.1 KM

Contact Us
99206 39914

PRIVILEGES APLENTY.

Sky City not only brings you well-designed homes but also a living space that truly enriches your life.



Actual images from other completed Oberoi Realty projects used for representational purposes only.

Landscaped Garden	Badminton Court	Yoga/Meditation Room	Back-up Generator for Emergency Power
Entrance Lobby with High Ceiling	Skating Rink	Multi Purpose Hall	Launderette*
CCTV in Select Common Areas	Swimming Pool	Indoor Games Area	Convenience Store*
Children's Play Area	Kids' Pool	Billiards/Pool	Day Care Center*
Jogging Track	Aqua Gym	Cricket Net	Doctor's Room/First Aid*
Squash Court	Gymnasium	Rock Climbing	Salon*
Tennis Court	Steam Room	High Speed Elevators	Café*

*Space will be provided. Amenities to be run by third party on chargeable basis.

Contact Us

99206 39914

Disclaimer: This document does not constitute an offer and/or acceptance and/or contract and/or agreement and/or transaction and/or any intention thereof and/or a disclosure of any nature whatsoever. The pictorial/other representations herein, the layout, number/orientation of buildings/towers/wings/structures, facilities, and amenities are merely a creative imagination and an Architect's impression and are only indicative. Actual product may vary/differ from what is indicated herein. The photographs used herein may be stock/standard photography used for the purpose and have been taken at a location other than the project site and are used to indicate a conceptual design. For detailed disclaimers refer to the page "Disclaimers" (page no. 28) all of which are deemed to be incorporated herein.

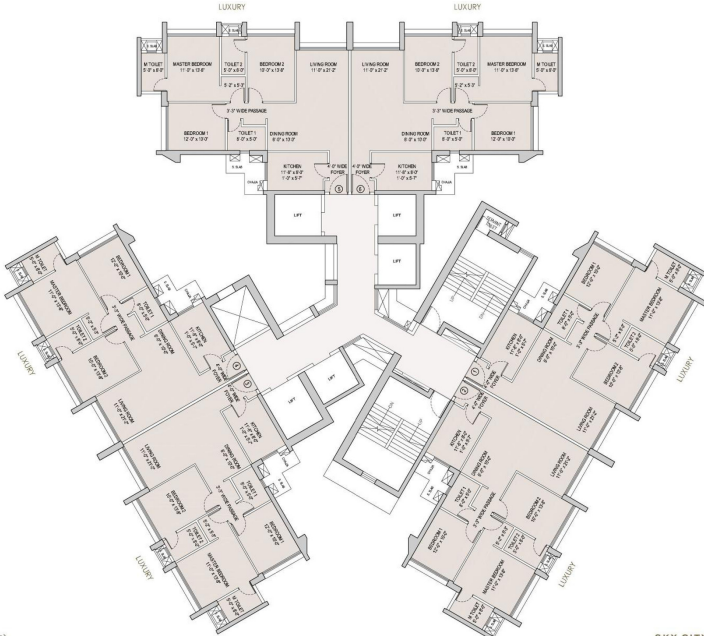
Sky City, Towers A to D - MahaRERA Registration No.: P5180000
Sky City Tower E - MahaRERA Registration No.: P6180000
View details at <https://maharera.maharera.com>



Contact Us
99206 39914

Superimposed, pertaining to only Towers A, B, C and D is a mere creative imagination and is only indicative. The Approved Layout With Phasing/User Superimposed is under applicable law. For detailed disclaimers refer to the page "Disclaimers" (page no. 28) all of which are deemed to be incorporated herein.

FLOOR PLANS



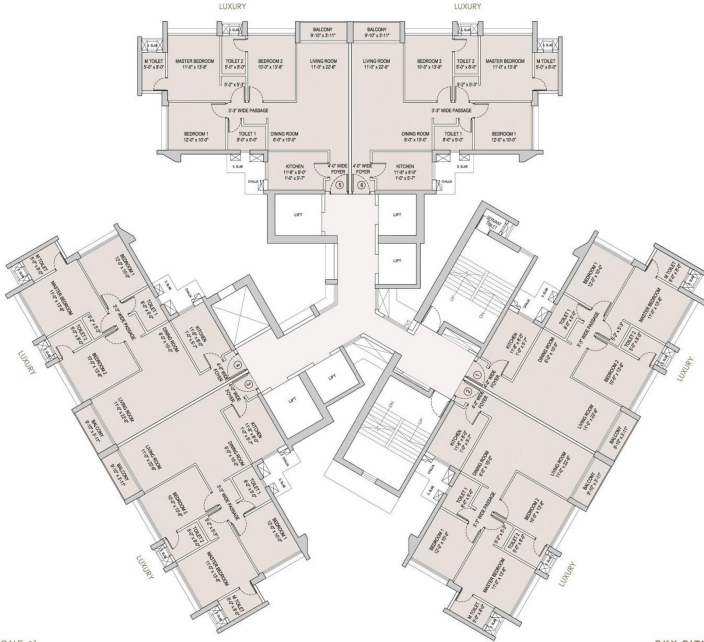
FLOORS 1 TO 34 (ZONE-1)

Disclaimer: The details shown/mentioned on the floor plans are as per the plans approved by the MCGM. This document may be modified and amended as mentioned in the proforma Agreement for sale. For detailed disclaimers refer to the page "Disclaimers" (page no. 28) all of which are deemed to be incorporated herein.

TOWER A
 SKY CITY AT BORIVALI, MUMBAI
 Sky City Tower A to D - Maharashtra Registration No: P11800030592
 Sky City Tower E - Maharashtra Registration No: P11800019404
 View details at <https://maharashtraonline.gov.in>



Contact Us
 99206 39914



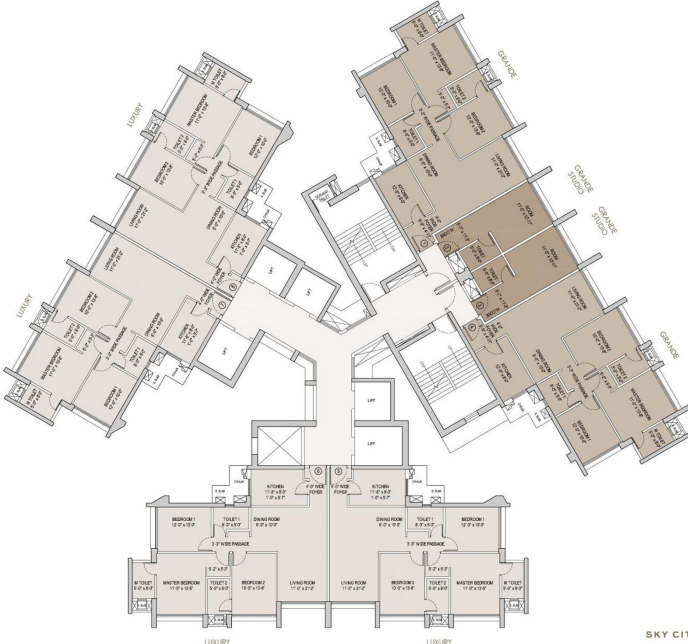
FLOOR 35 ONWARDS (ZONE-2)

Disclaimer: The details shown/mentioned on the floor plans are as per the plans approved by the MCGM. This document may be modified and amended as mentioned in the proforma Agreement for sale. For detailed disclaimers refer to the page "Disclaimers" (page no. 28) all of which are deemed to be incorporated herein.

TOWER A
 SKY CITY AT BORIVALI, MUMBAI
 Sky City Tower-A to D - Maharashtra Registration No: P18100003092
 Sky City Tower E - Maharashtra Registration No: P21800019404
 View details at <https://maharens.mahaonline.gov.in>



Contact Us
 99206 39914

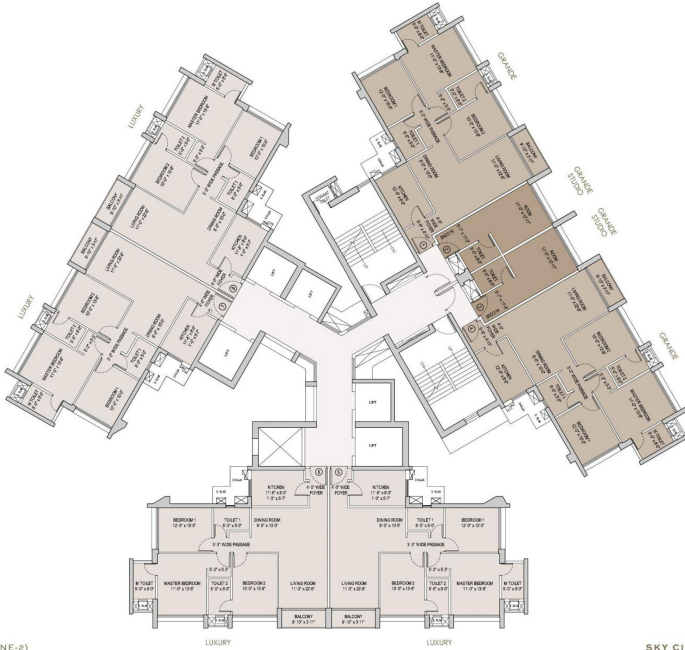


FLOORS 1 TO 34 (ZONE-1)

Disclaimer: The details shown/mentioned on the floor plans are as per the plans approved by the MCGM. This document may be modified and amended as mentioned in the proforma Agreement for sale. For detailed disclaimers refer to the page "Disclaimers" (page no. 28) all of which are deemed to be incorporated herein.

TOWER B
 SKY CITY AT BORIVALI, MUMBAI
 Sky City Towers A to D - Maharashtra Registration No. P181000030502
 Sky City Tower E - Maharashtra Registration No. P218100019404
 View details at <https://maharens.mahaonline.gov.in>

Contact Us
 99206 39914

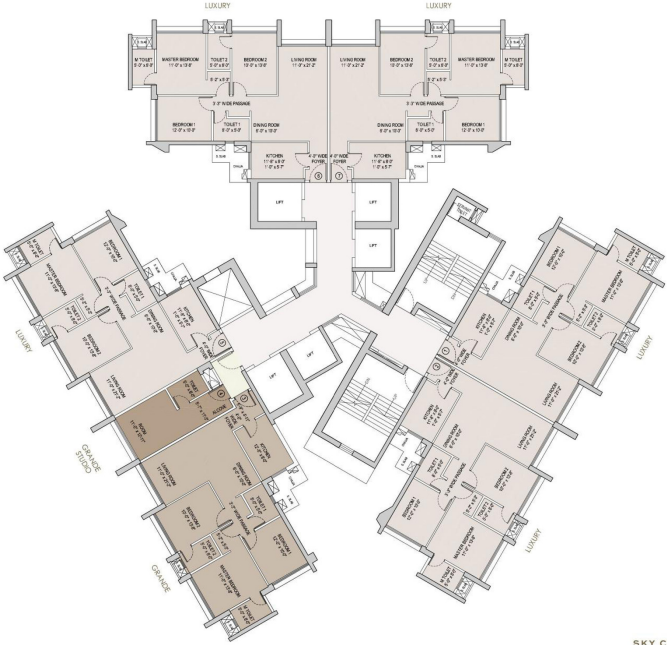


FLOOR 35 ONWARDS (ZONE-2)

Disclaimer: The details shown/mentioned on the floor plans are as per the plans approved by the MCGM. This document may be modified and amended as mentioned in the proforma Agreement for sale. For detailed disclaimers refer to the page "Disclaimers" (page no. 28) all of which are deemed to be incorporated herein.

TOWER B
 SKY CITY AT BORIVALI, MUMBAI
 Sky City Tower-A to D - Maharashtra Registration No: PR1800003092
 Sky City Tower E - Maharashtra Registration No: PR1800019404
 View details at <https://maharashtraonline.gov.in>

Contact Us
 99206 39914



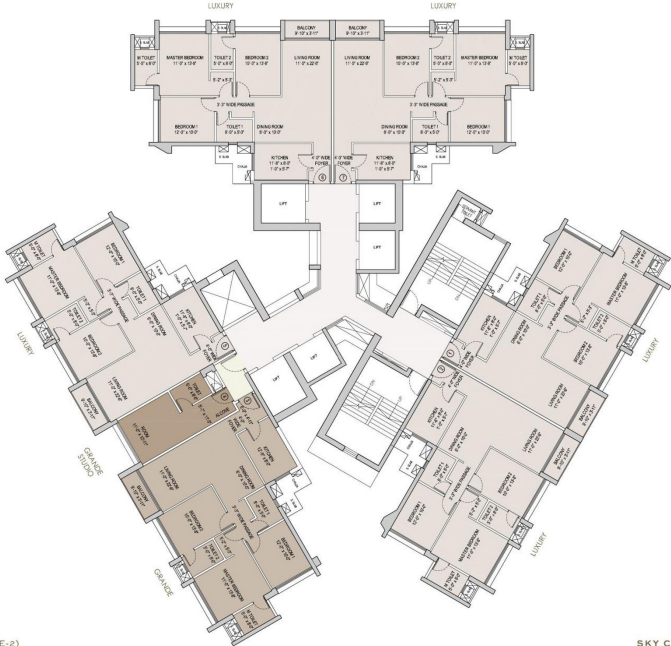
FLOORS 1 TO 34 (ZONE-1)

Disclaimer: The details shown/mentioned on the floor plans are as per the plans approved by the MCGM. This document may be modified and amended as mentioned in the prototype Agreement for sale. For detailed disclaimers refer to the page "Disclaimers" (page no. 28) all of which are deemed to be incorporated herein.

TOWER C
 SKY CITY AT BORIVALI, MUMBAI
 Sky City Towers A to D - Maharashtra Registration No: P181000310292
 Sky City Tower E - Maharashtra Registration No: P18100019404
 View details at <https://maharashtra.naukri.com>



Contact Us
 99206 39914



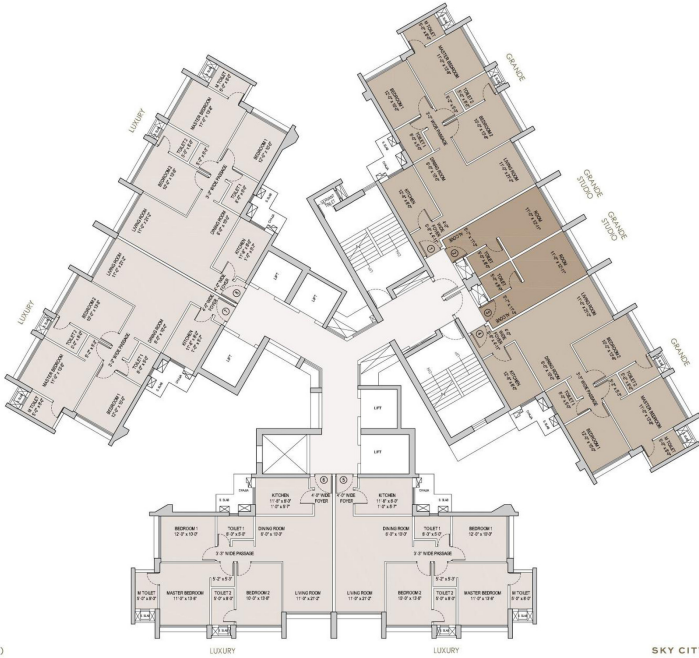
FLOOR 35 ONWARDS (ZONE-2)

Disclaimer: The details shown/mentioned on the floor plans are as per the plans approved by the MCGM. This document may be modified and amended as mentioned in the prototype Agreement for sale. For detailed disclaimers refer to the page "Disclaimers" (page no. 28) all of which are deemed to be incorporated herein.

TOWER C
 SKY CITY AT BORIVALI, MUMBAI
 Sky City Towers A to D - Maharashtra Registration No.: P21800030292
 Sky City Tower E - Maharashtra Registration No.: P21800019404
 View details at <https://maharashtra.mahaonline.gov.in>



Contact Us
 99206 39914

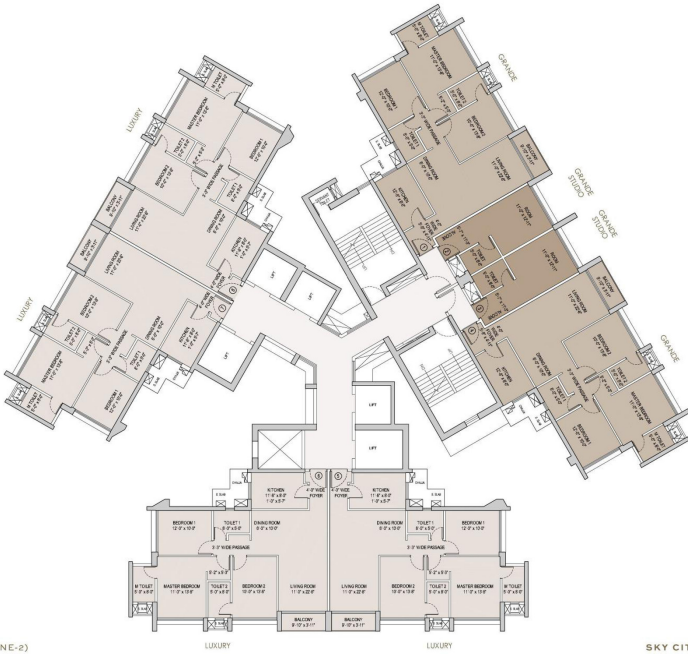


FLOORS 1 TO 34 (ZONE-1)

Disclaimer: The details shown/mentioned on the floor plans are as per the plans approved by the MCGM. This document may be modified and amended as mentioned in the proforma Agreement for sale. For detailed disclaimers refer to the page "Disclaimers" (page no. 28) all of which are deemed to be incorporated herein.

TOWER D
 SKY CITY AT BORIVALI, MUMBAI
 Sky City Tower A to D - Maharashtra Registration No. P181000030592
 Sky City Tower E - Maharashtra Registration No. P18100019404
 View details at <https://maharashtra.mahaonline.gov.in>

Contact Us
 99206 39914

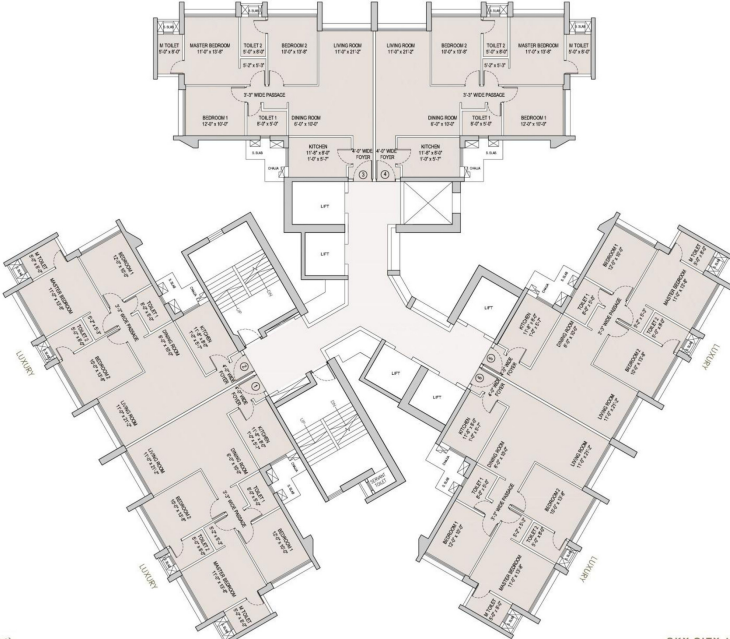


FLOOR 35 ONWARDS (ZONE-2)

Disclaimer: The details shown/mentioned on the floor plans are as per the plans approved by the MCGM. This document may be modified and amended as mentioned in the protoma Agreement for sale. For detailed disclaimers refer to the page "Disclaimers" (page no. 26) all of which are deemed to be incorporated herein.

TOWER D
 SKY CITY AT BORIVALI, MUMBAI
 Sky City Towers A to D - Maharashtra Registration No.: PS1800033582
 Sky City Tower E - Maharashtra Registration No.: PS1800036604
 View details at <https://maharegnet.maharegnet.gov.in>

Contact Us
 99206 39914



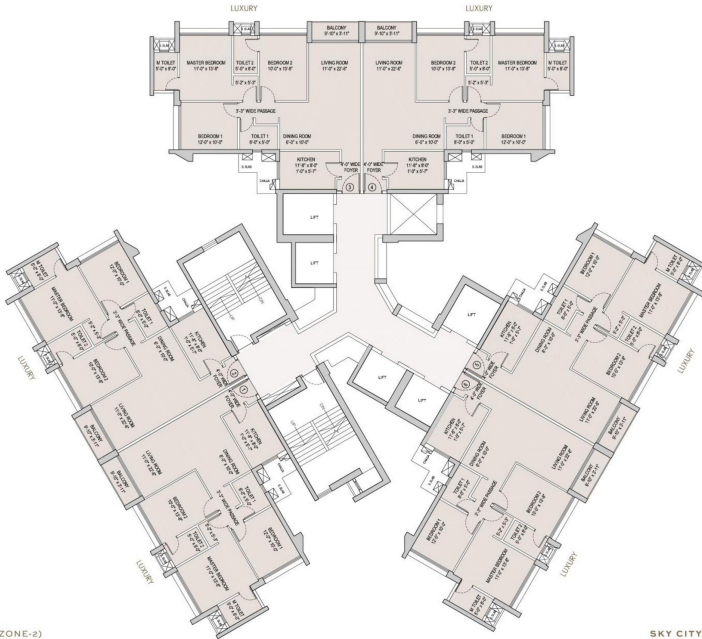
FLOOR 1 TO 34 (ZONE-1)

Disclaimer: The details shown/mentioned on the floor plans are as per the plans approved by the MCGM. This document may be modified and amended as mentioned in the proforma Agreement for sale. For detailed disclosures refer to the page "Disclosures" (page no. 28) all of which are deemed to be incorporated herein.

TOWER E
 SKY CITY AT BORIVALI, MUMBAI
 Sky City Towers A to D - Maharashtra Registration No. PR1800003092
 Sky City Tower E - Maharashtra Registration No. PR1800019404
 View details at <https://maharera.mahatimeline.gov.in>



Contact Us
 99206 39914



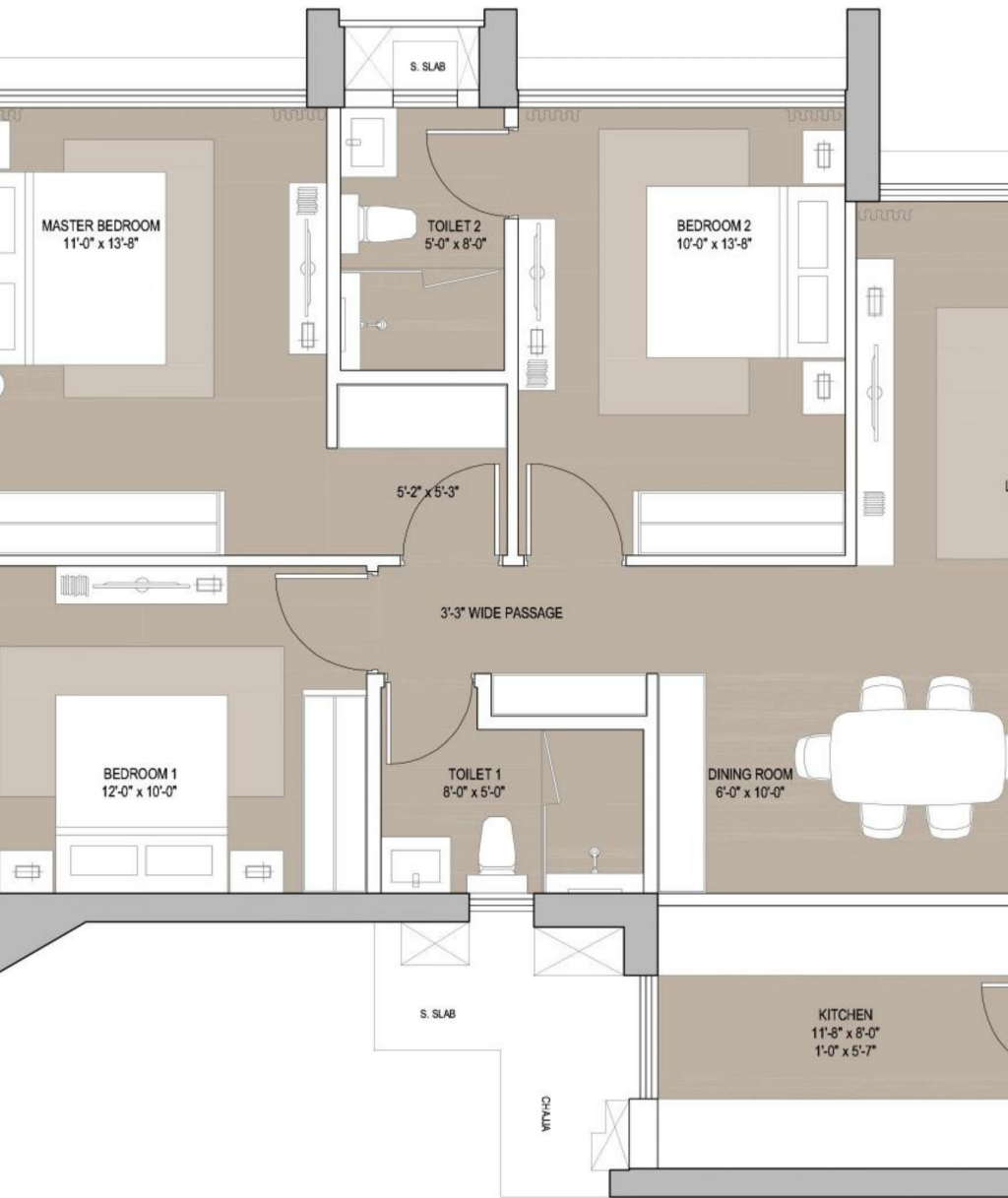
FLOOR 35 ONWARDS (ZONE-2)

Disclaimer: The details shown/mentioned in the floor plans are as per the plans approved by the MCGM. This document may be modified and amended as mentioned in the proforma Agreement for sale. For detailed disclaimers refer to the page "Disclaimers" (page no. 28) all of which are deemed to be incorporated herein.

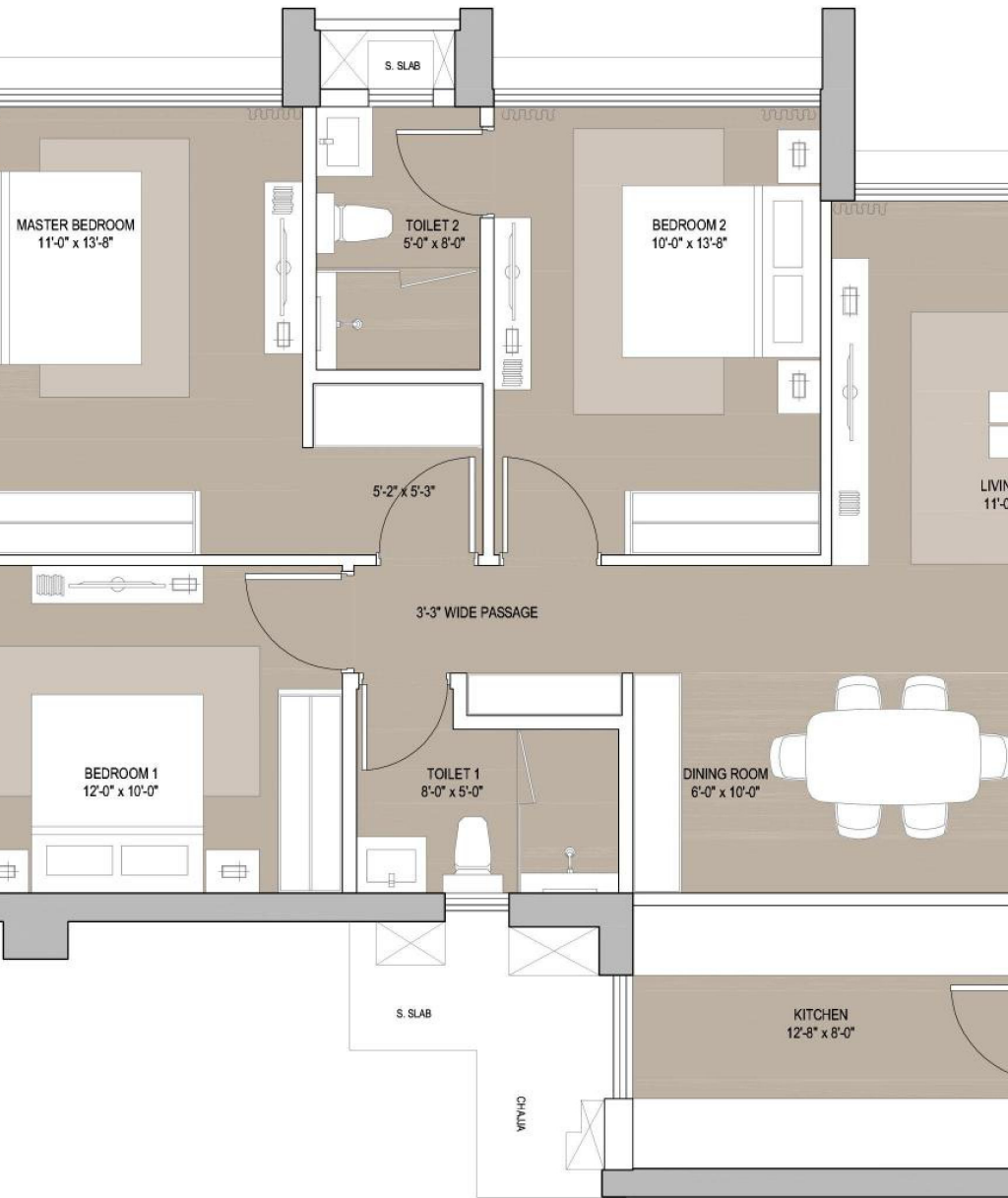
TOWER E
 SKY CITY AT BORIVALI, MUMBAI
 Sky City Towers A to D - Maharashtra Registration No.: PR160303032
 Sky City Tower E - Maharashtra Registration No.: PR160219404
 View details at <https://maharashtra.mahaonline.gov.in>



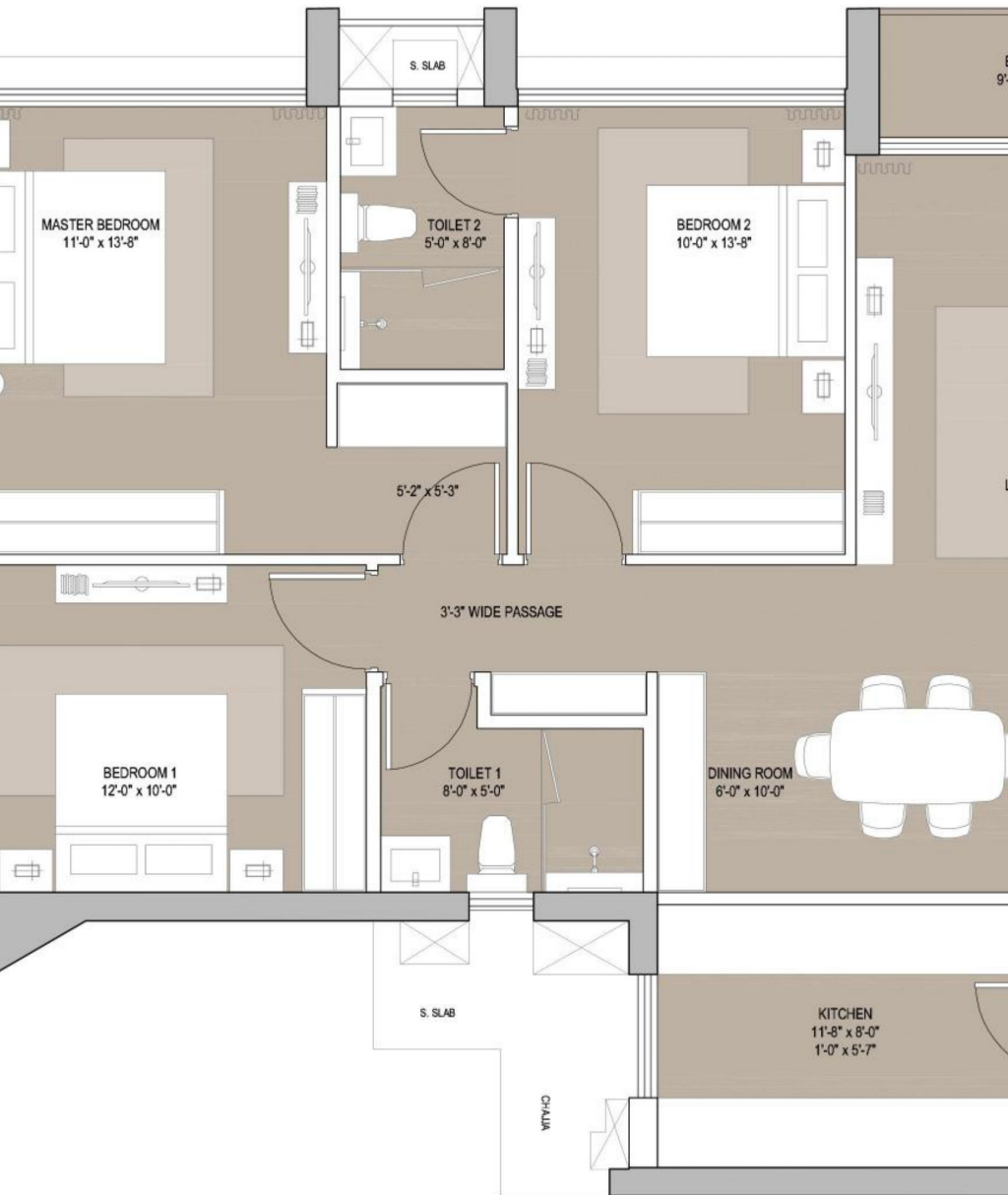
Contact Us
 99206 39914

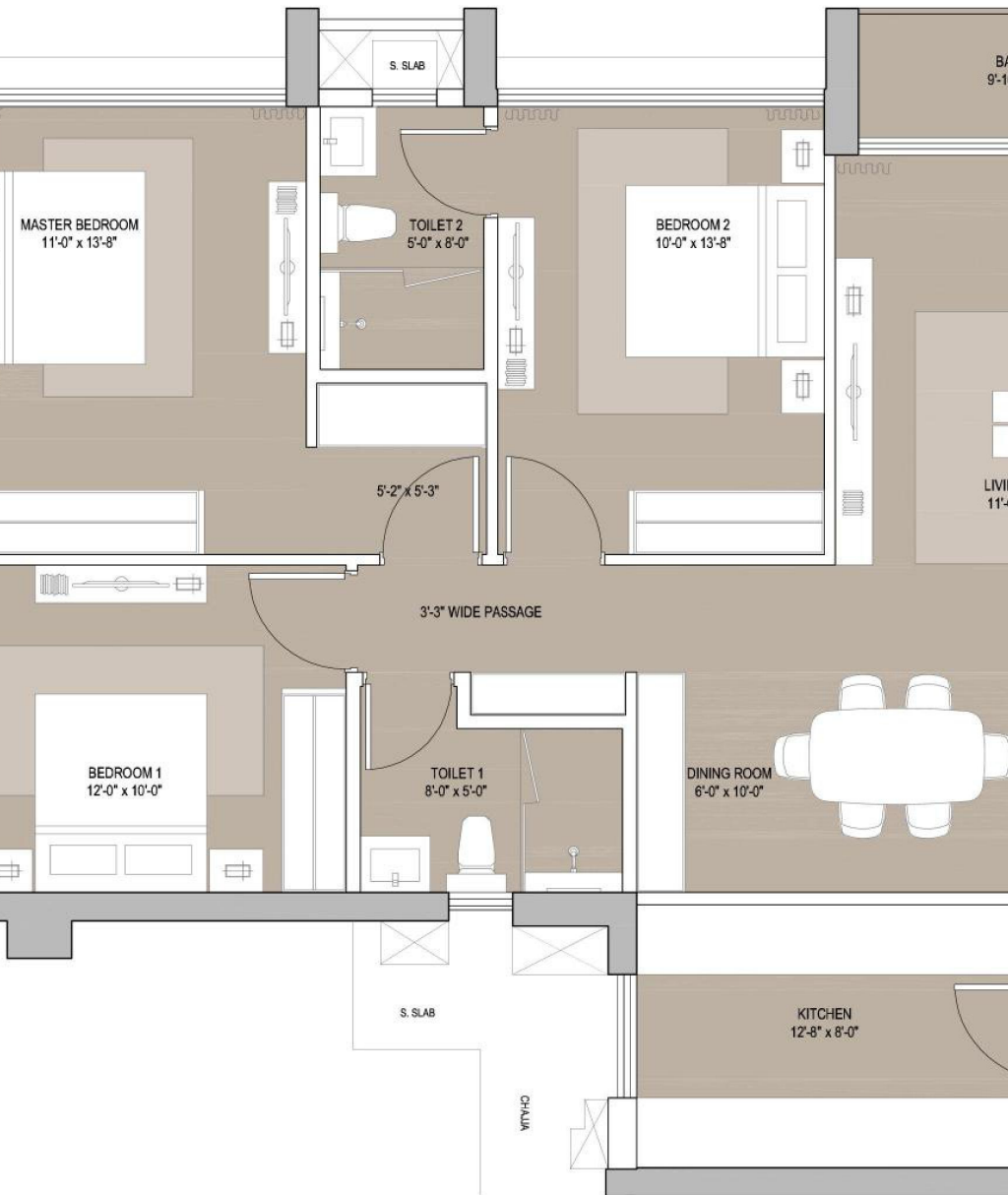


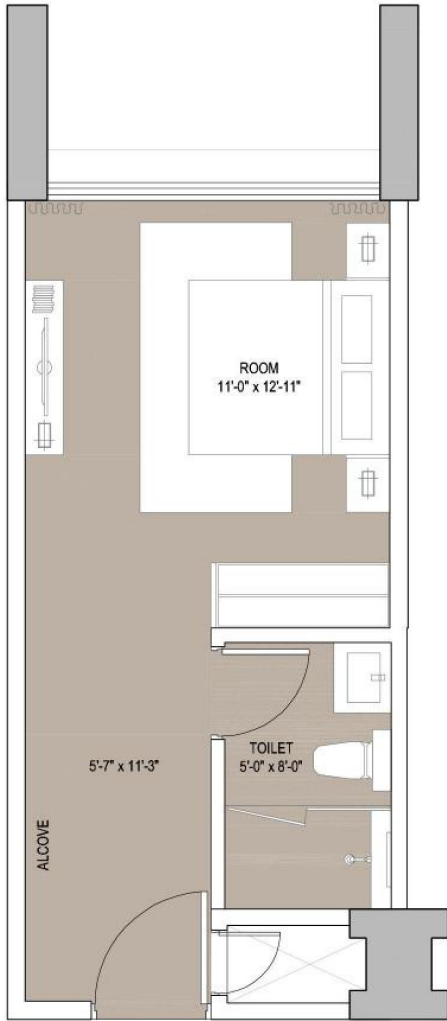
Contact Us
99206 39914



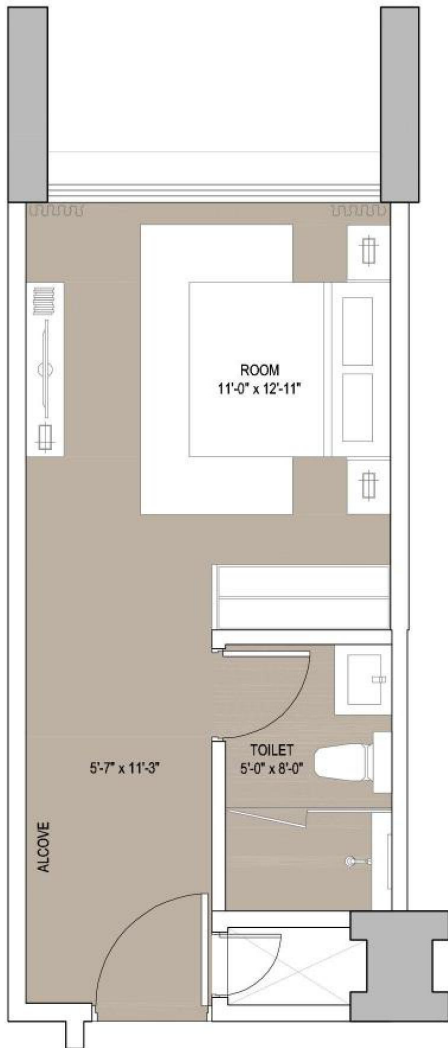
Contact Us
 99206 39914







Contact Us
99206 39914



Contact Us
99206 39914

DISCLAIMERS

1. You are requested to independently, either directly or through your legal/financial consultants, thoroughly verify all details/documents pertaining to this project as available on <https://maharera.mahaonline.gov.in> under the name "Sky City Towers A to D" (bearing MahaRERA registration number P51800003582) and "Sky City Tower E" (bearing MahaRERA registration number P51800018404), including the Approved Layout With Phasing/User Superimposed; the proforma Agreement for Sale, which details the Fixtures and Fittings, the common areas, facilities and amenities; the approvals and permissions; the title certificate and details of encumbrances; and, the manner in which the entire layout is proposed to be developed.
2. This brochure does not constitute an offer and/or acceptance and/or contract and/or agreement and/or transaction and/or any intention thereof and/or a disclosure under any statute of any nature whatsoever.
3. The layout plan, the orientation of buildings/towers/wings/structures, the common areas, facilities and amenities, the fixtures, fittings, soft furnishing/furniture, gadgets, technology, information, pictures, images and visuals, drawings, specifications, sketches and other details herein are merely a creative imagination and an Architect's impression and are only indicative. The developer reserves the right to change any or all of these in the interest of the development as permissible under law. These should not be construed in any manner as disclosures under the provisions of the Real Estate (Regulation and Development) Act, 2016 and the Rules thereunder by Government of Maharashtra and/or applicable law, and the relevant applicable disclosures shall be made at an appropriate time.
4. All dimensions mentioned in this brochure may vary/differ due to construction exigencies. Actual product may vary/differ from what is indicated herein. Further, dimensions mentioned on the floor plans are as per the plans approved by the MCGM and the same are subject to construction exigencies.
5. The photographs contained herein may be stock/standard photography used for the purpose and may have been taken at a location other than the project site and are used to indicate a conceptual lifestyle.
6. No representation or warranty is made or intended as to the accuracy or completeness of information herein or as to its suitability or adequacy for any purpose.
7. Please examine all documents and information uploaded by the developer on the website of RERA at <https://maharera.mahaonline.gov.in> under the project name "Sky City Towers A to D" (bearing MahaRERA registration number P51800003582) and "Sky City Tower E" (bearing MahaRERA registration number P51800018404) to understand the documents and information in all respect.

Contact Us
99206 39914

